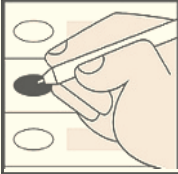


# OFFICIAL ABSENTEE / PROVISIONAL / EMERGENCY BALLOT

Pickens County, Georgia  
Precinct: 116-YellowCreek  
Special Election - March 18, 2025



### To Vote:

1. Use Black or Blue Ink to mark the ballot.
2. Completely fill in the empty oval to the left of the candidate name or choice in all races you wish to vote.
3. If voting for a Write-In candidate, completely fill in the oval to the left of the Write-In selection, then write the name of the Write-In candidate in the space provided.

### Warning

- Do NOT use red ink or felt tip pen to mark ballot.
- Do NOT circle, underline or mark through choices.
- Do NOT use check marks or X to mark ballot.
- Do NOT mark more choices per race than allowed.
- Do NOT sign, cut, tear or damage the ballot.

### If you make a mistake or change your mind on a selection:

- A. Do not attempt to mark through the selection or attempt to erase. Write "**Spoiled**" across **the ballot AND across the return envelope**.
- B. Mail or return the spoiled ballot and envelope to your county board of registrars; a new official absentee ballot will be mailed to you.

**If you decide to vote in-person:** Surrender the ballot to the poll manager at an early voting site within your county or the precinct to which you are assigned. You will then be permitted to vote a regular ballot.

*"I understand that the offer or acceptance of money or any other object of value to vote for any particular candidate, list of candidates, issue, or list of issues included in this election constitutes an act of voter fraud and is a felony under Georgia law." [O.C.G.A. 21-2-284(e), 21-2-285(h) and 21-2-383(a)]*

## Special Election

### ESPLOST (Vote for One)

Shall a total of up to \$35,000,000 in aggregate principal amount of Pickens County School District general obligation debt (the "Bonds") be issued for the purpose for paying (a) the cost of (i) adding to, renovating, modifying, improving, equipping, constructing and demolishing existing school buildings and facilities; (ii) acquiring miscellaneous new equipment, fixtures, furnishings for the school district, including information technology equipment and software, safety and security equipment; (iii) acquiring school buses, transportation and maintenance vehicles and other school vehicles; (iv) purchasing textbooks including E-books, devices, test prep materials; (v) equipping and upgrading physical education facilities, athletic facilities, cafeteria, lunchroom and kitchen facilities, CTAE facilities; (vi) constructing a college and career center, and (vii) acquiring any necessary or desirable property, both real and personal (the "Projects") (b) capitalized interest on the Bonds through and including December 1, 2026, and (c) the cost of issuing the Bonds; and shall a special one percent sales and use tax be continued in Pickens County for a period of time not to exceed 20 calendar quarters and for the raising of not more than \$70,000,000, for the purpose of funding (a) the payment of a portion of the principal of and interest on the Bonds, the maximum amount of debt service to be paid on the Bonds not to exceed \$24,124,400, and (b) a portion of the costs of the Projects, the maximum amount of the Projects to be funded will not exceed the balance of the one percent sales and use tax proceeds?

- Yes
- No